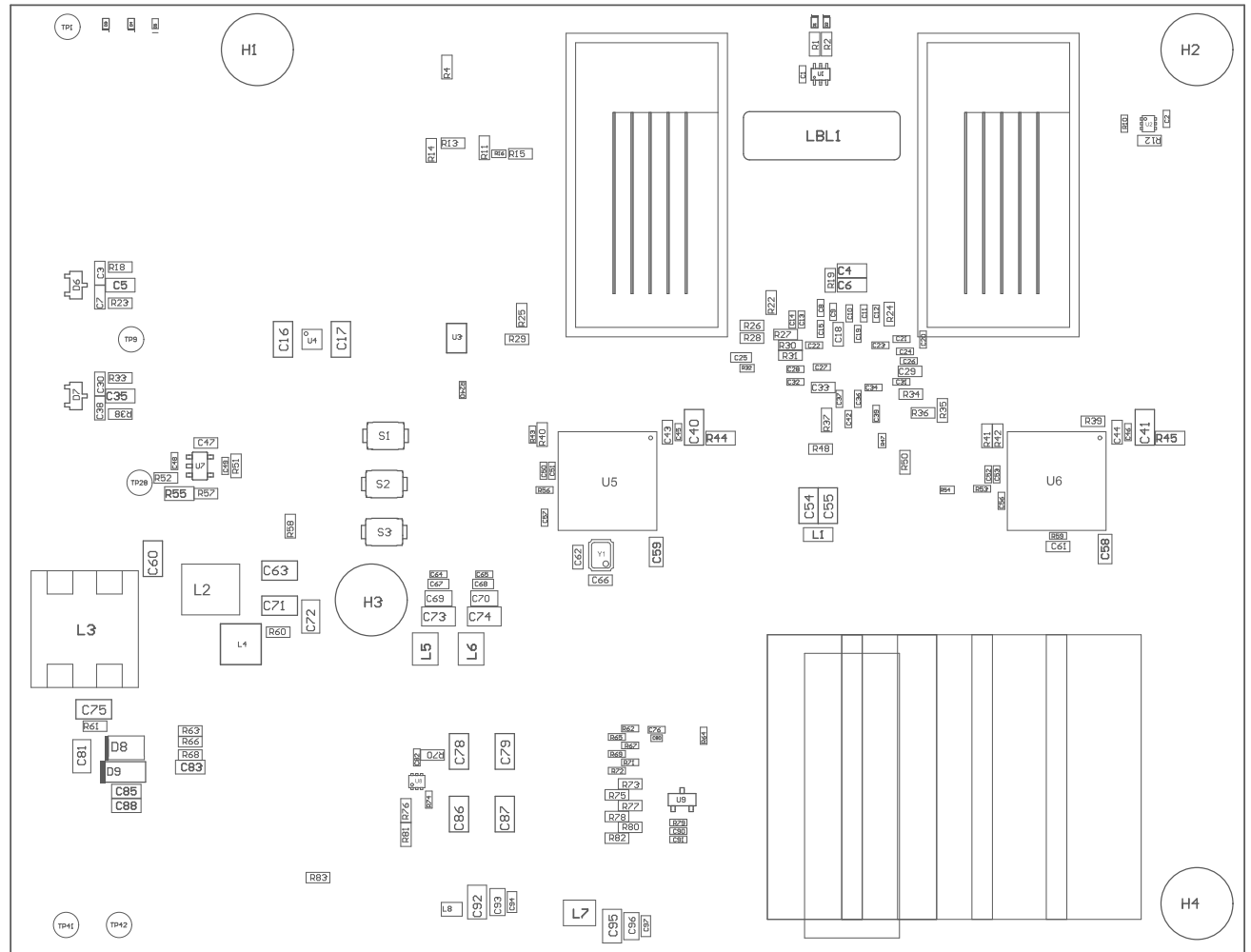


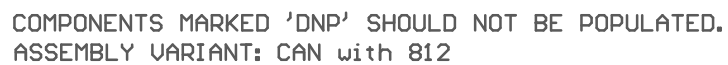
Board = 100mm x 130mm

- ZZ1 ■ Install label in silkscreened box after final wash. Text shall be 8 pt font. Text shall be per the Label Table in the PDF schematic.
- ZZ2 ■ These assemblies are ESD sensitive, ESD precautions shall be observed.
- ZZ3 ■ These assemblies must be clean and free from flux and all contaminants. Use of no clean flux is not acceptable.
- ZZ4 ■ These assemblies must comply with workmanship standards IPC-A-610 Class 2, unless otherwise specified.



COMPONENTS MARKED 'DNP' SHOULD NOT BE POPULATED.
ASSEMBLY VARIANT: CAN with 812

PCB VIEWED FROM TOP SIDE	BOARD #: PROC206	REV: C	SUN REV: Not in version control
	TID #:	AWR2243-2X-CAS-EVM	
PLOT NAME = Top Assembly Drawing	GENERATED	: 4/10/2025 12:52:28 PM	TEXAS INSTRUMENTS



PCB VIEWED FROM BOTTOM SIDE	BOARD #: PROC206	REV: C	SUN REV: Not in version control
	TID #: AWR2243-2X-CAS-EVM		
PLOT NAME = Bottom Assembly Drawing	GENERATED : 4/10/2025 12:52:28 PM		TEXAS INSTRUMENTS